

COMPANY: DEER LAKE OIL & GAS INC.

WELL: DEER LAKE OIL & GAS ET AL

WESTERN ADVENTURE N

FIELD: EXPLORATORY

PROVINCE: NEWFOUNDLAND

PROVINCE: NEWFOUNDLAND		NORTHING: 5,456,519		Elev
Field: EXPLORATORY		EASTING: 482,797		
Location:		Permanent Datum:		GROUND LEVEL
Well: DEER LAKE OIL & GAS ET AL		Log Measured From:		DRILL FLOOR
Company: DEER LAKE OIL & GAS INC.		Drilling Measured From:		DRILL FLOOR
Schlumberger		API Serial No.		NOR
2000-120-01-01				5,4
Logging Date		3-AUG-2000		
Run Number		1		
Depth Driller		872 m		
Schlumberger Depth		873.5 m		
Bottom Log Interval		870 m		
Top Log Interval		218 m		
Casing Driller Size @ Depth		114.300 mm @		218 m
Casing Schlumberger		218 m		
Bit Size		96.000 mm		
Type Fluid In Hole		POT. SULFATE		
Density		Viscosity		
Fluid Loss		PH		
Source Of Sample		MEASURED		
RM @ Measured Temperature		0.539 ohm.m @		15 degC
RMF @ Measured Temperature				@
RMC @ Measured Temperature				@
Source RMF		RMC		
RM @ MRT		RMF @ MRT		
Maximum Recorded Temperatures		22 degC @		22
Circulation Stopped		Time		22:00
Logger On Bottom		Time		9:10
Unit Number		Location		
Recorded By		KELLI SASCO		
Witnessed By		ROB TAYLOR		

AL
O.1

COMPENSATED

D.F. 92.5 m

above Perm. Datum

EASTING:
482,797

[illegible]

ALL INTERPRETATIONS ARE OPINIONS BASED ON INFERENCES FROM ELECTRICAL OR OTHER MEASUREMENTS AND WE CANNOT, AND DO NOT GUARANTEE THE ACCURACY OR CORRECTNESS OF ANY INTERPRETATIONS, AND WE SHALL NOT, EXCEPT IN THE CASE OF GROSS OR WILLFUL NEGLIGENCE ON OUR PART, BE LIABLE OR RESPONSIBLE FOR ANY LOSS, COSTS, DAMAGES OR EXPENSES INCURRED OR SUSTAINED BY ANYONE RESULTING FROM ANY INTERPRETATION MADE BY ANY OF OUR OFFICERS, AGENTS OR EMPLOYEES. THESE INTERPRETATIONS ARE ALSO SUBJECT TO CLAUSE 4 OF OUR GENERAL TERMS AND CONDITIONS AS SET OUT IN OUR CURRENT PRICE SCHEDULE.

OTHER SERVICES1
OS1: DUAL LATEROLOG
OS2: BHC SONIC
OS3: COMPENSATED NEUTRON
OS4: LITHO DENSITY
OS5:

REMARKS: RUN NUMBER 1

1ST DESCENT: DUAL LATEROLOG, GR


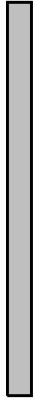



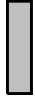

2ND DESCENT: BHC SONIC, GR

3RD DESCENT: COMPENSATED NEUTRON, LITHO DENSITY, GR

OTHER SERVICES2

OS1:
OS2:
OS3:
OS4:
OS5:

REMARKS: RUN NUMBER 2

CEMENT VOLUME BASED ON 66.7MM PRODUCTION CASING					
** SP SHIFTED ON REPEAT PASS **					
SCALES AND INTERVALS AS PER CLIENT REQUEST					
RIG: LONGYEAR SUPER 50					
CREW 19: OTTO MARSHALL, MIKE DIGGDON					
RUN 1			RUN 2		
SERVICE ORDER #: PROGRAM VERSION: FLUID LEVEL:			SERVICE ORDER #: PROGRAM VERSION: FLUID LEVEL:		
LOGGED INTERVAL	START	STOP	LOGGED INTERVAL	START	STOP
EQUIPMENT DESCRIPTION					
RUN 1			RUN 2		
SURFACE EQUIPMENT					
WITM (DTS)-A					
DOWNHOLE EQUIPMENT					
LEH-ST LEH-ST		9.83			
STGC-B STGH-B 8007 STGC0-A STGC1-B		8.92			
Gamma Ray		8.39			
CTEM		7.92			
TelStatus		6.57			
AH-201 AH-201		6.57			
SSLT-B SSLX-BB SSAS-BB SSLC-BA SSCH-BA		6.02			
	TxC				
	TxA				

RX ARRAY

R1

R2

R3 3.26

R4

R5

R6

TxB

BNS-CCS

HV DF
Tension ACCZ

TOOL ZERO

0.00

0.14

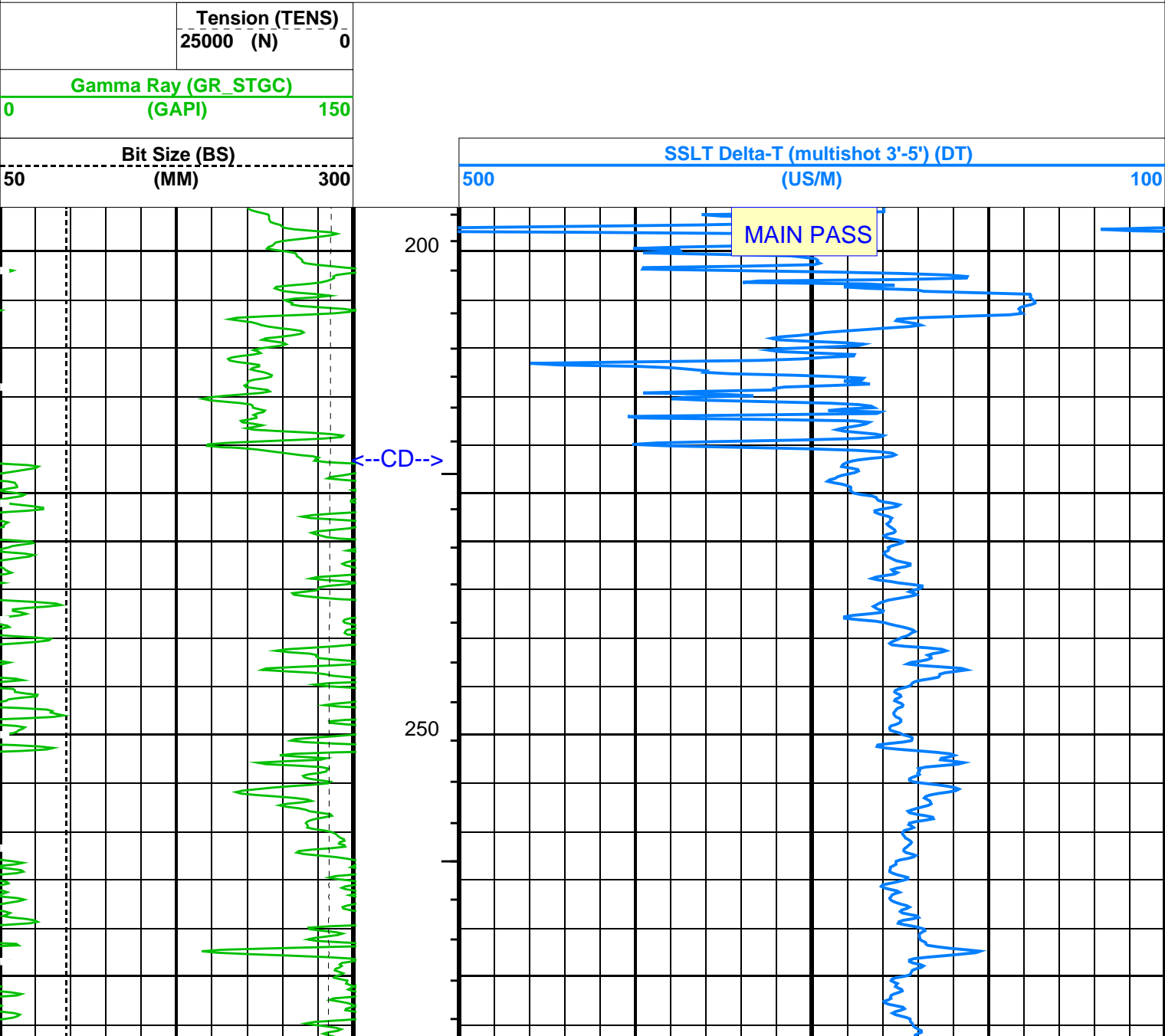
MAXIMUM STRING DIAMETER 70 MM
MEASUREMENTS RELATIVE TO TOOL ZERO
ALL LENGTHS IN METERS

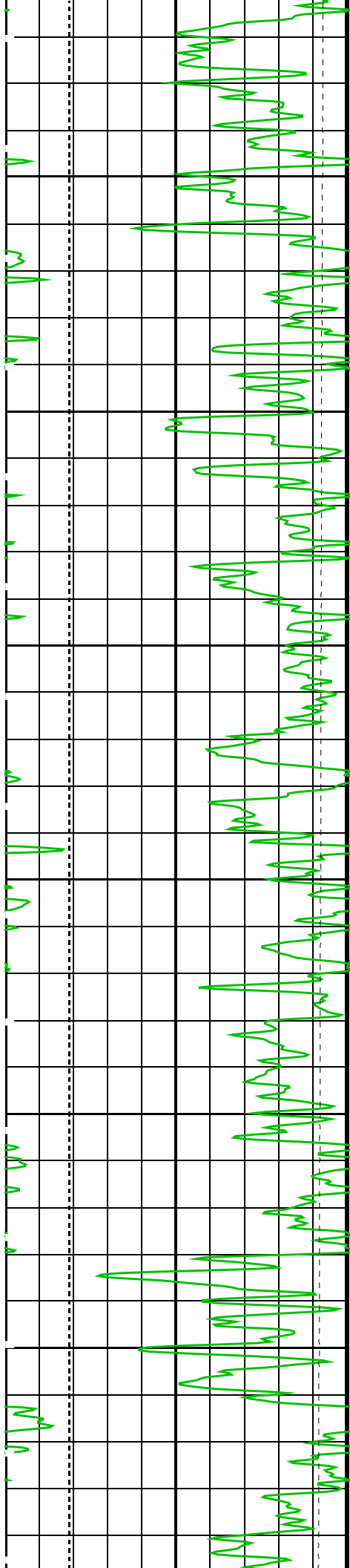
PIP SUMMARY

└ Integrated Transit Time Minor Pip Every 1 MS

└ Integrated Transit Time Major Pip Every 10 MS

■ Time Mark Every 60 S

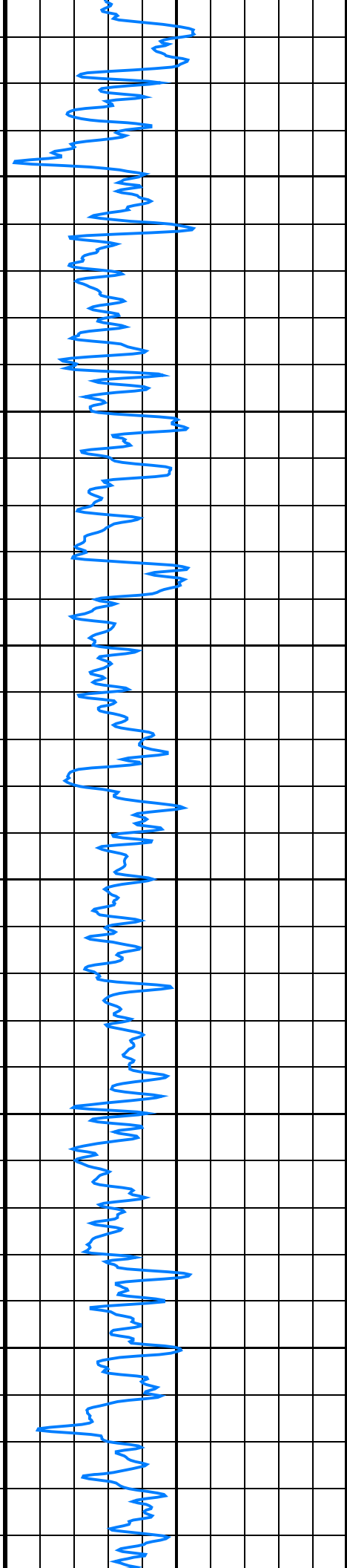


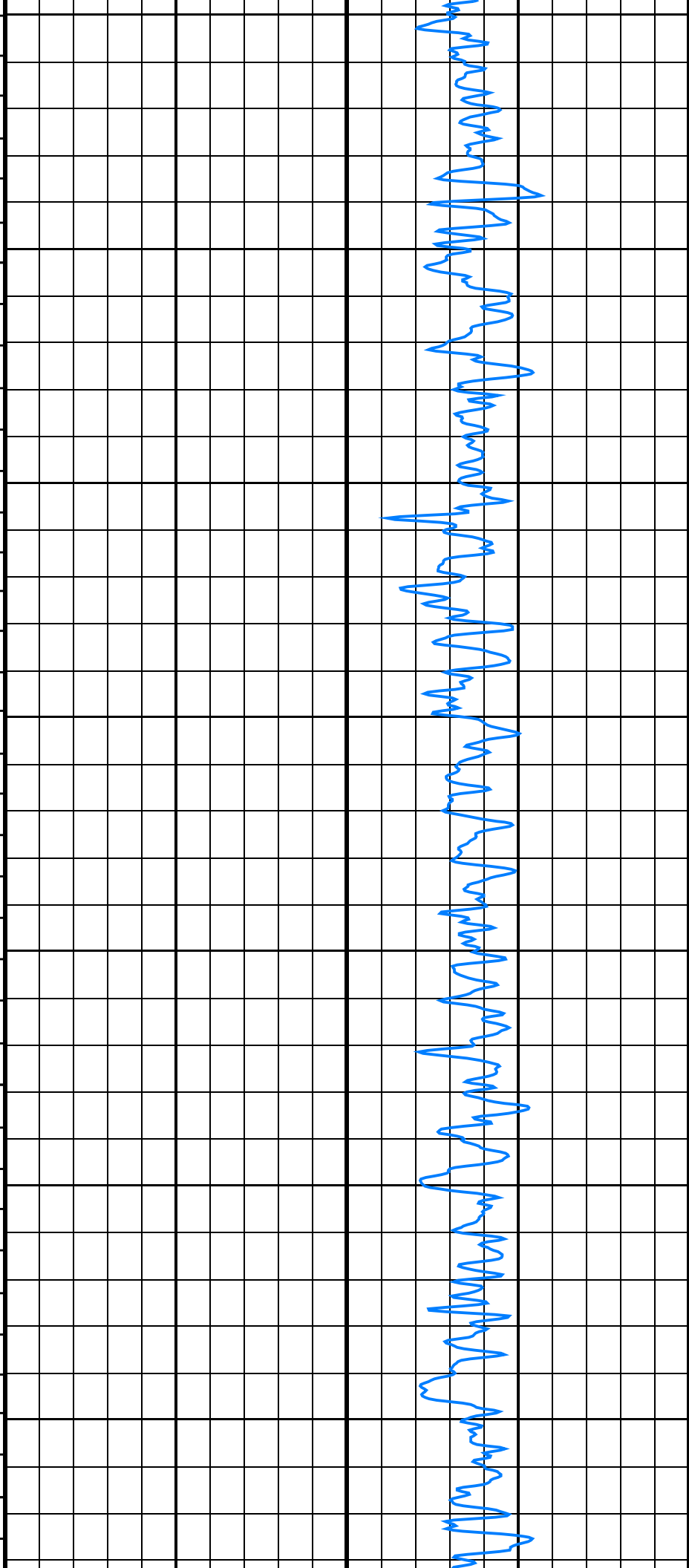
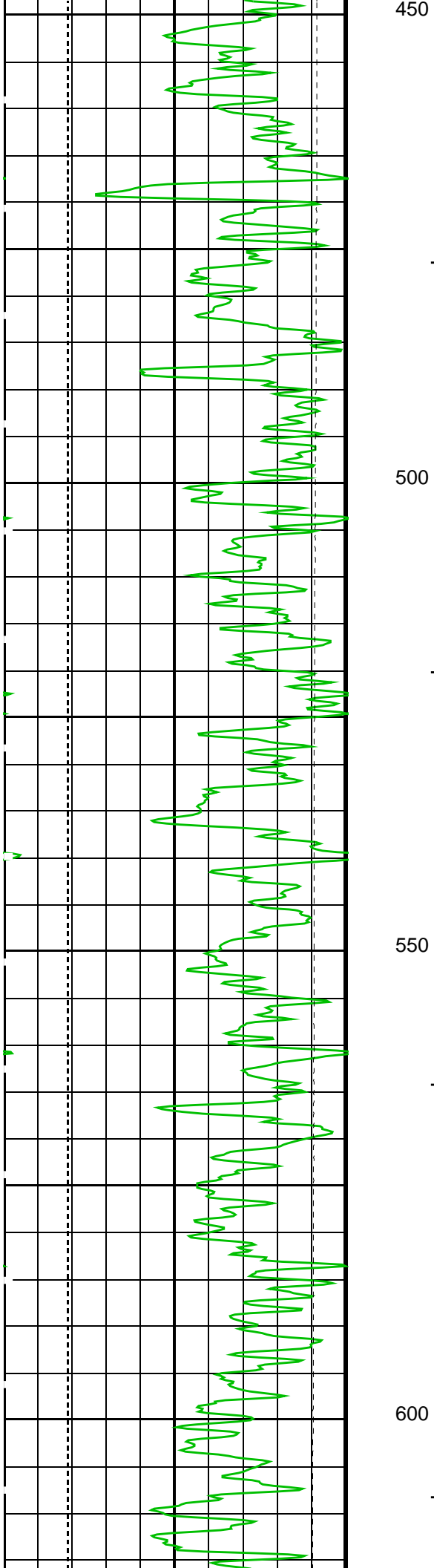


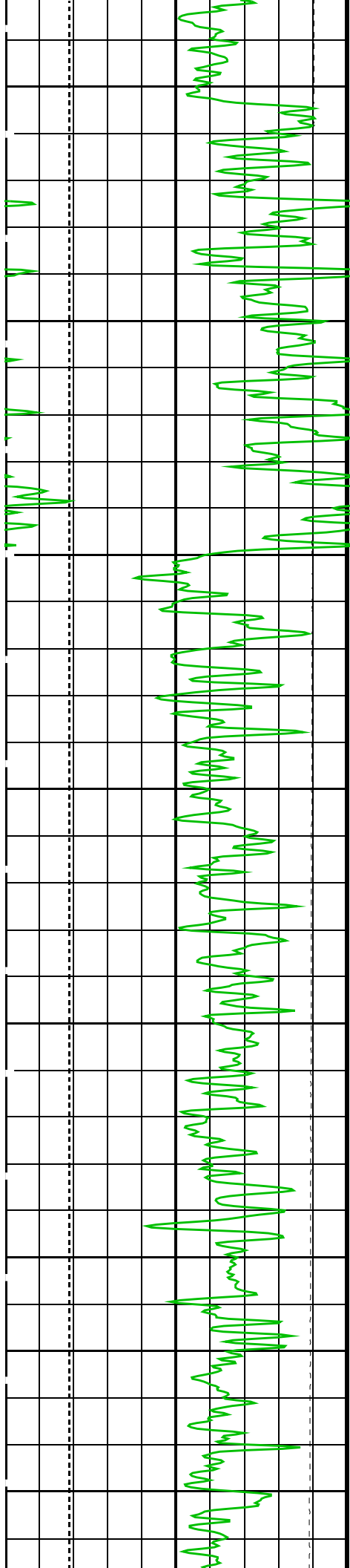
300

350

400



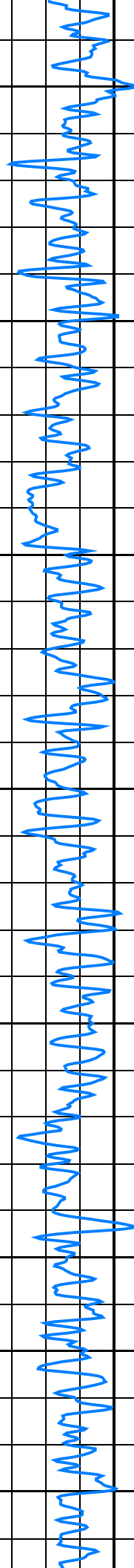


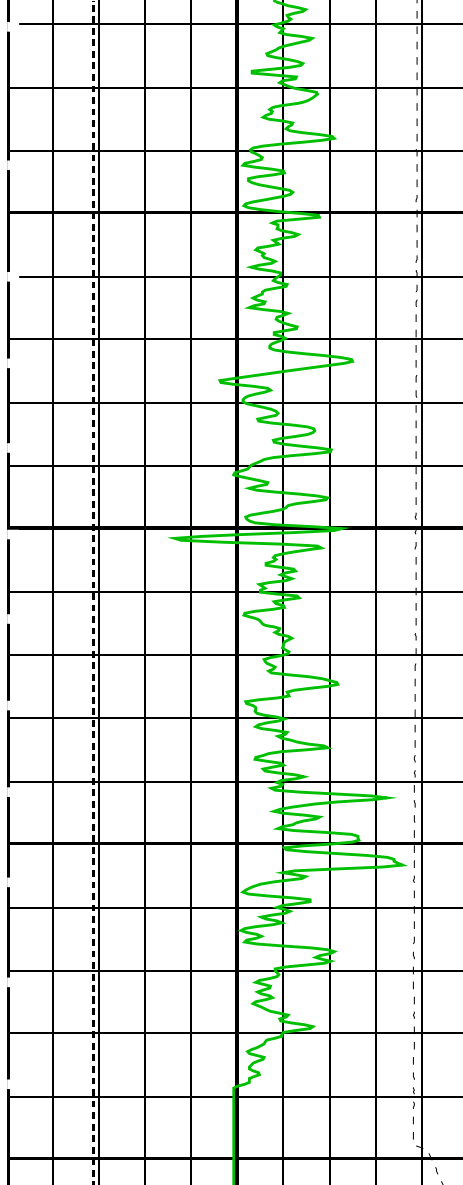


650

700

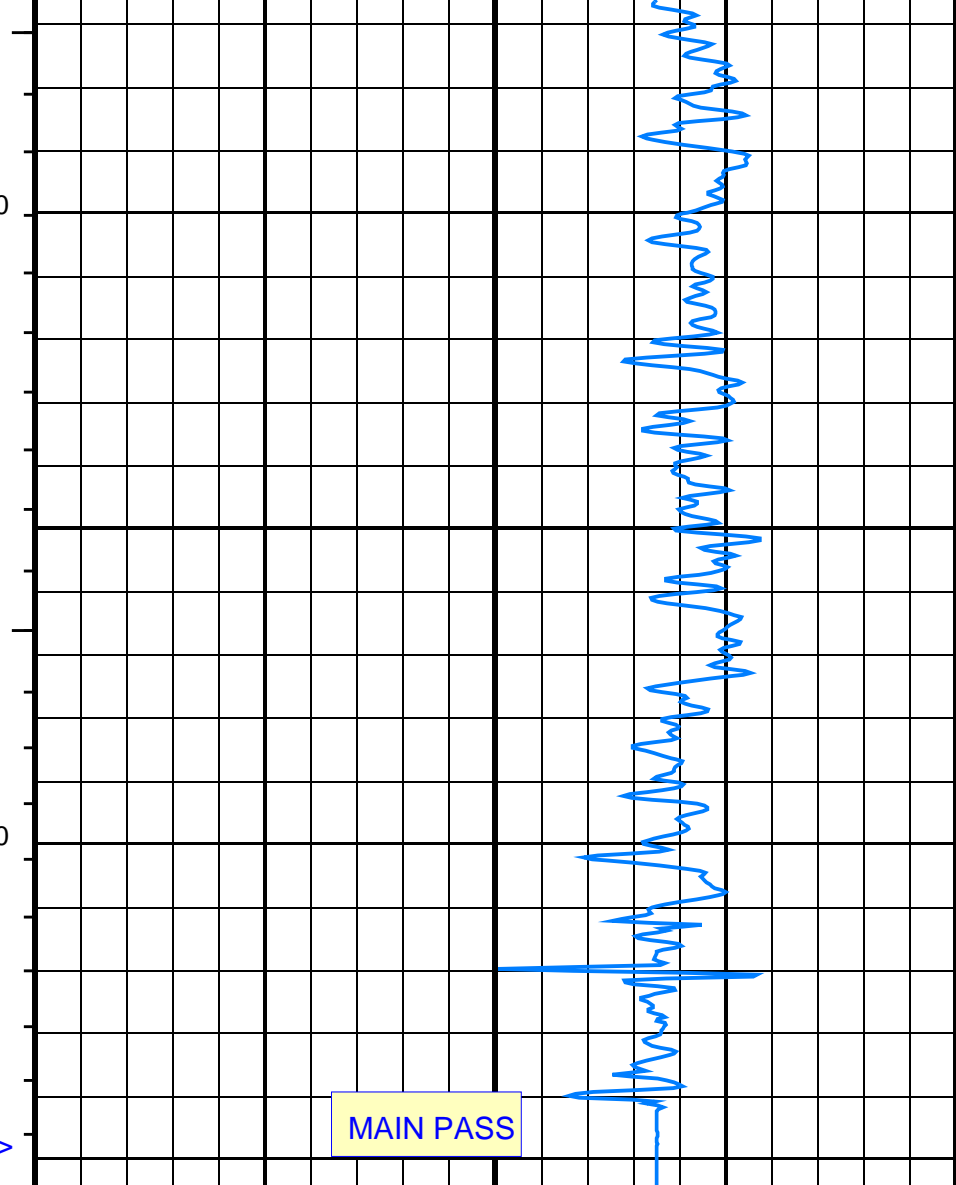
750





Bit Size (BS)	
50	300
(MM)	
Gamma Ray (GR_STGC)	
0	150
(GAPI)	
Tension (TENS)	
25000	0
(N)	

<--TD-->



SSLT Delta-T (multishot 3'-5') (DT)	
500	100
(US/M)	

MAIN PASS

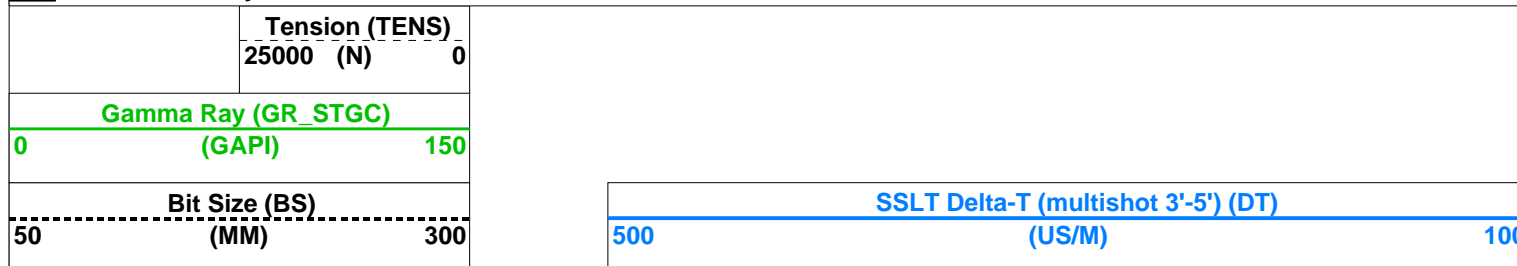
PIP SUMMARY

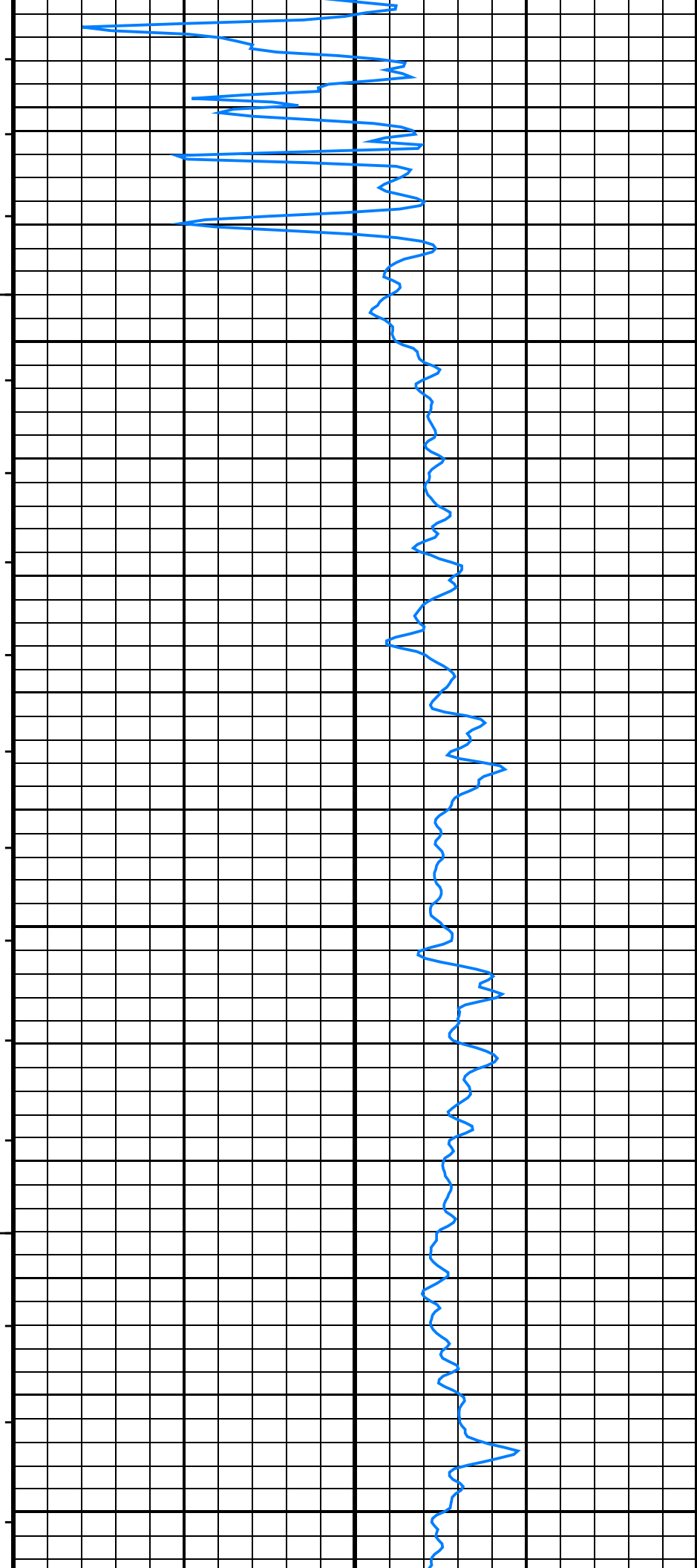
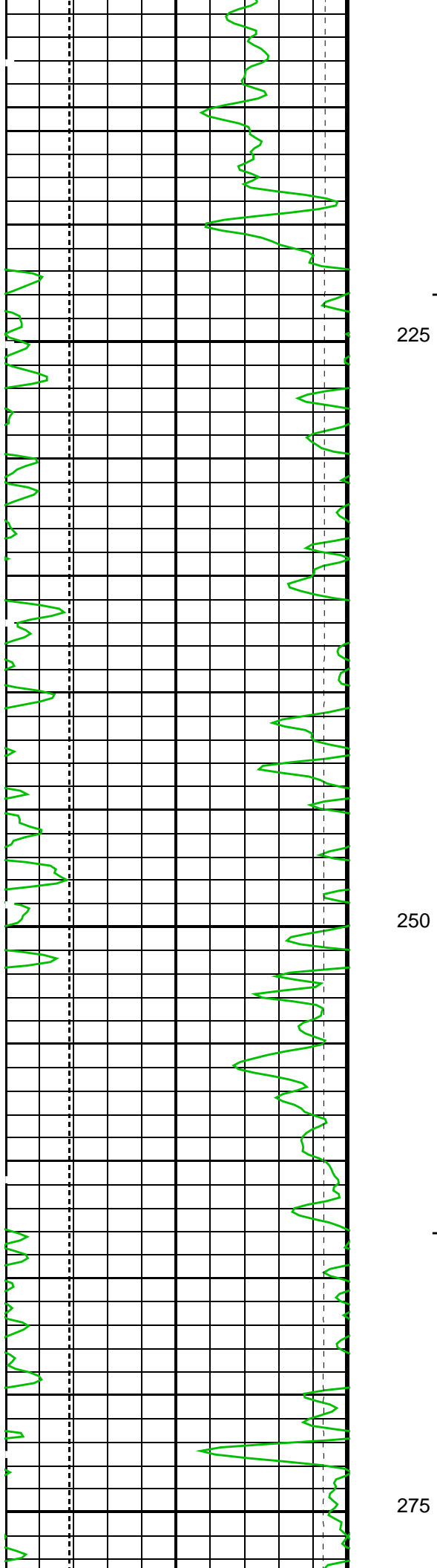
- └ Integrated Transit Time Minor Pip Every 1 MS
- └ Integrated Transit Time Major Pip Every 10 MS

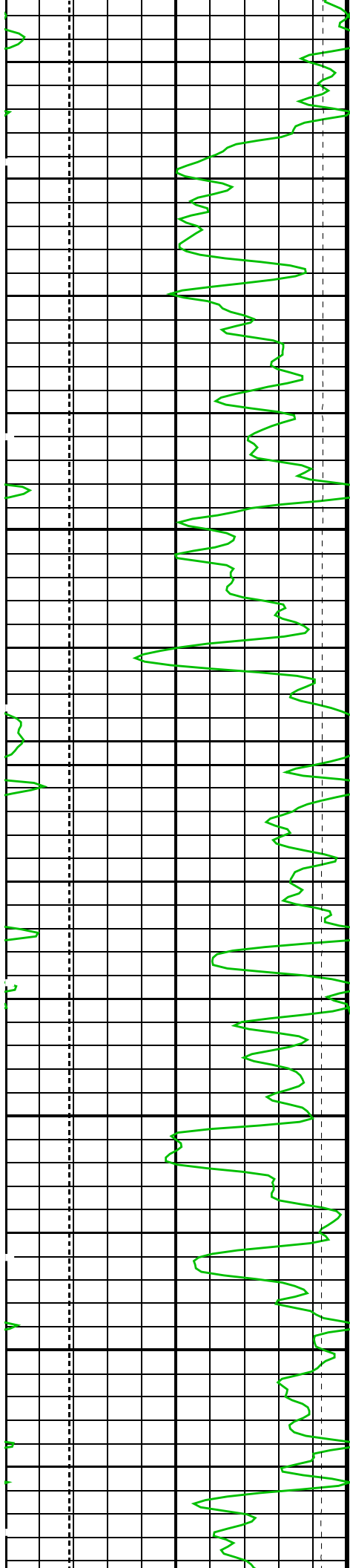
Time Mark Every 60 S

Parameters

DLIS Name	Description	Value	
ACSR	Array Cycle Skip Recovery	ON	
AMSG	Auxilliary Minimum Sliding Gate	180	US
BS	Bit Size	96.000	MM
CBLG	CBL Gate Width	80	US
DDE1	Digitizing Delay 1 - Upper Tx	200	US
DDE2	Digitizing Delay 2 - Lower Tx	200	US
DDE3	Digitizing Delay 3 - Far Tx	200	US
DETE	Detection Peak	E2	
DFAD_ATC	DFAD Automatic Threshold Control	ON	
DFAD_INTERVAL_MODE	Detection Interval Mode for first arrival	TRACK	
DLSR	Depth Log Sampling Rate	TT1.5_WF6	
DO	Depth Offset	0.0	M
DSIN	Digitizing Sample Interval	10	US
DTCM	Delta-T Computation Mode	FULL	
DTLCM	Delta-T Long Computation Mode	FULL	

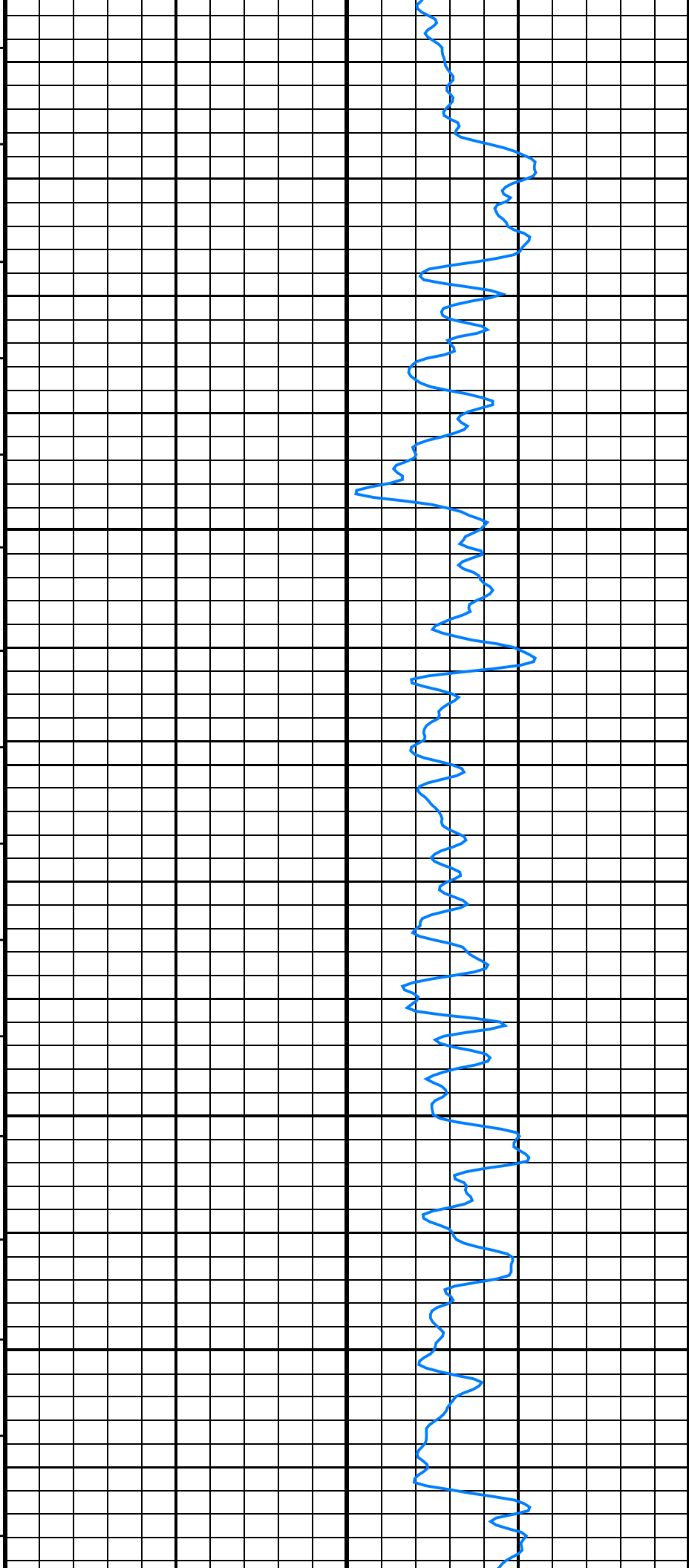


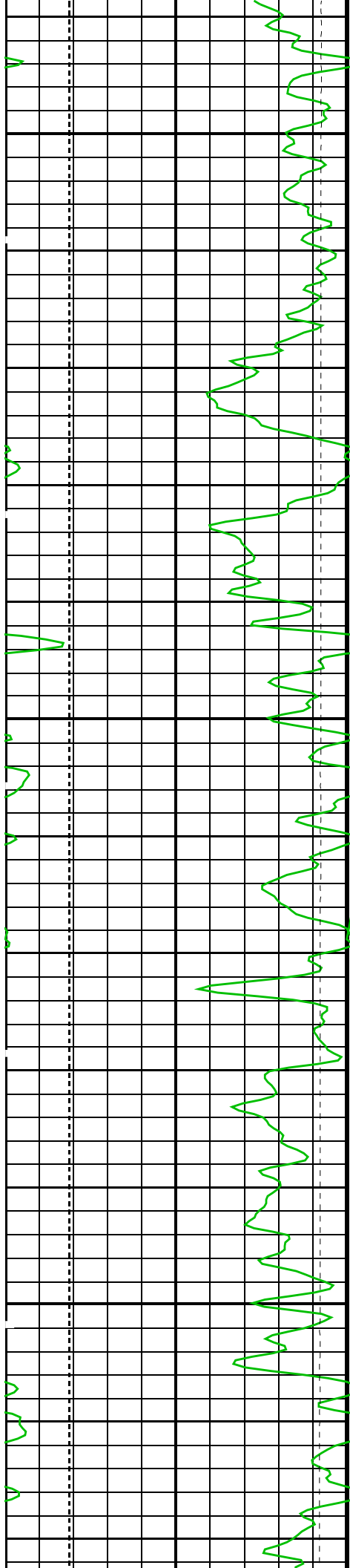




300

325

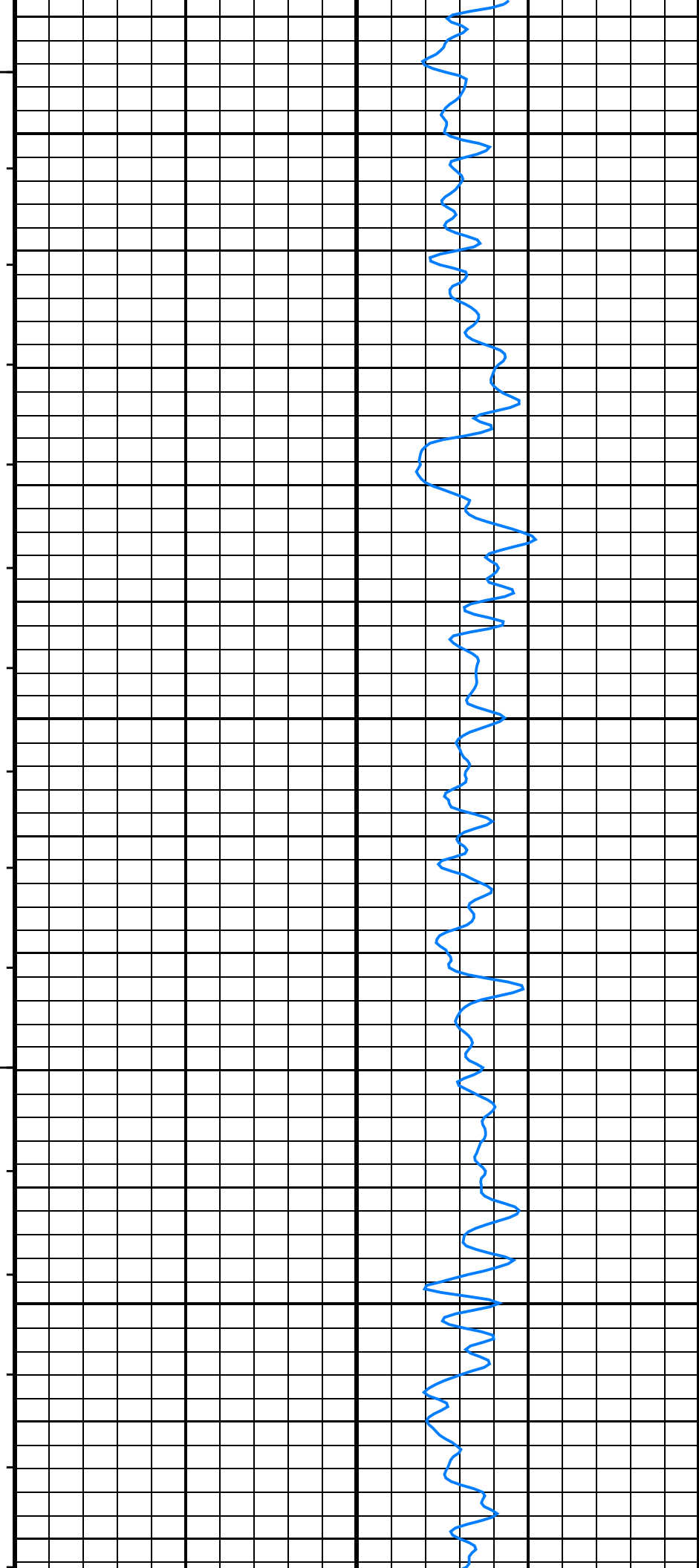


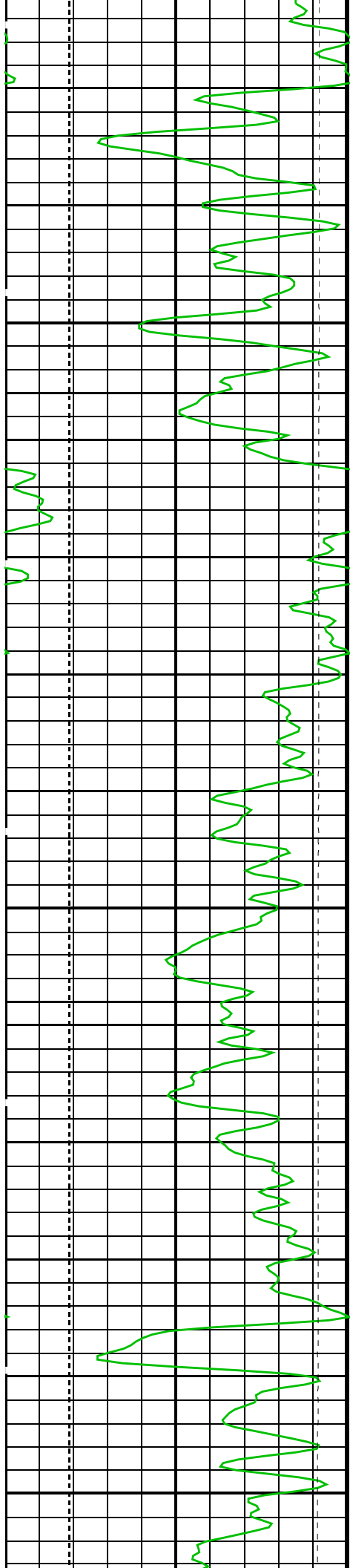


350

375

400

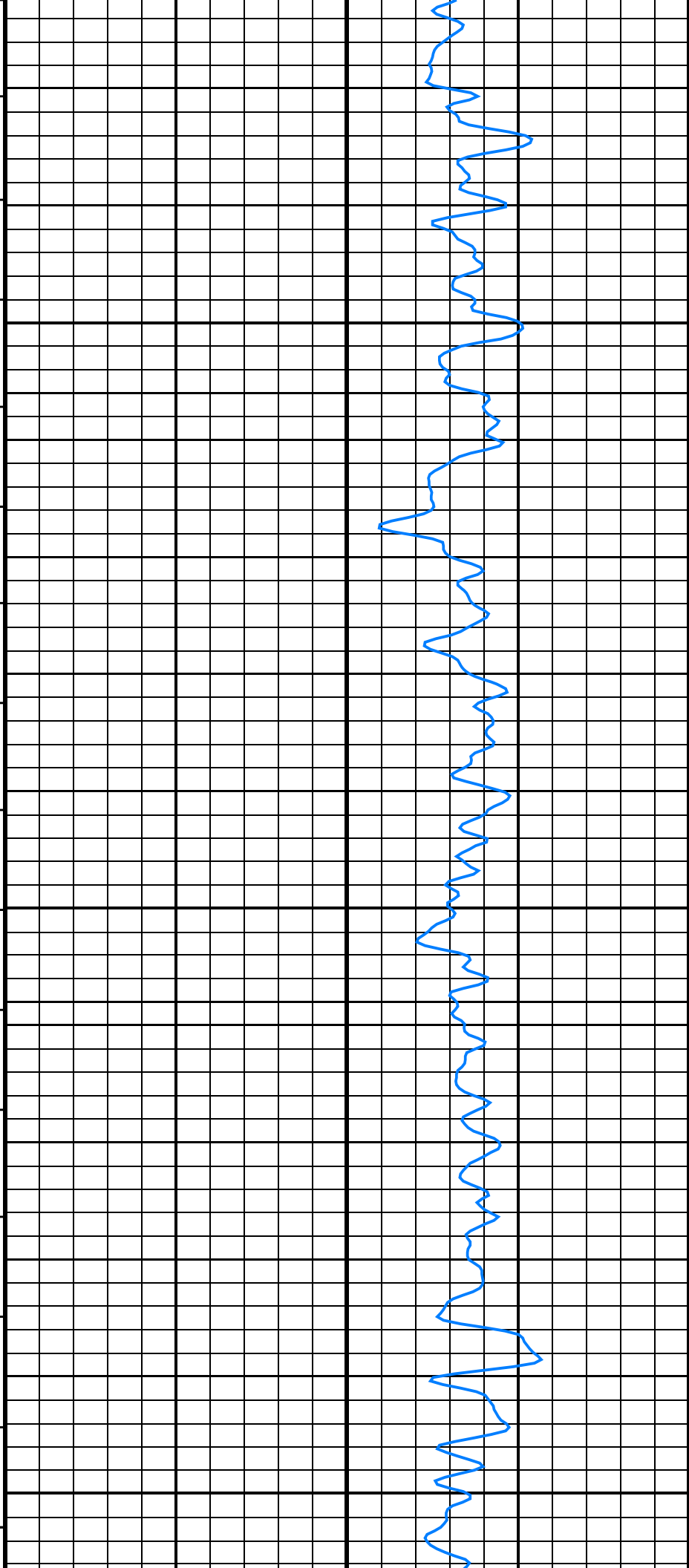


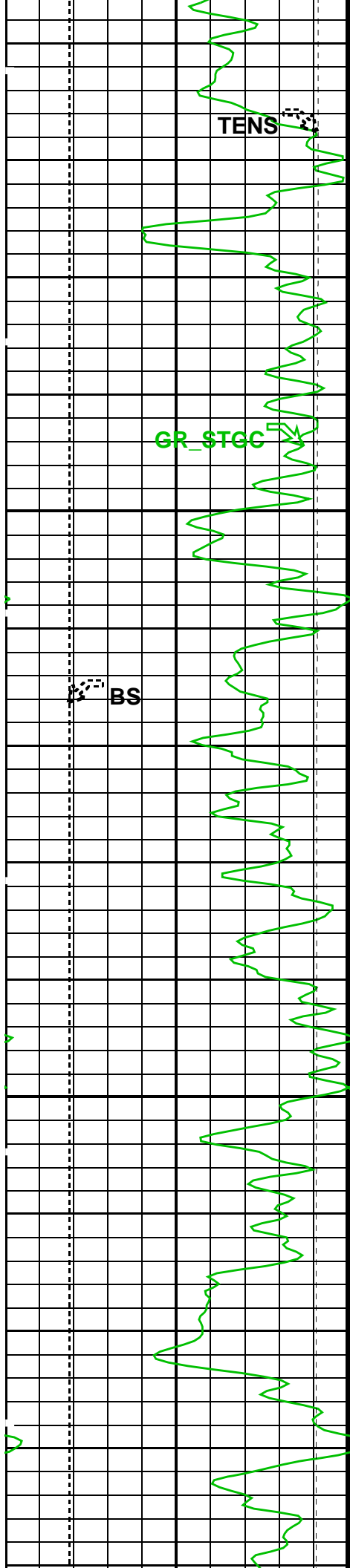


425

450

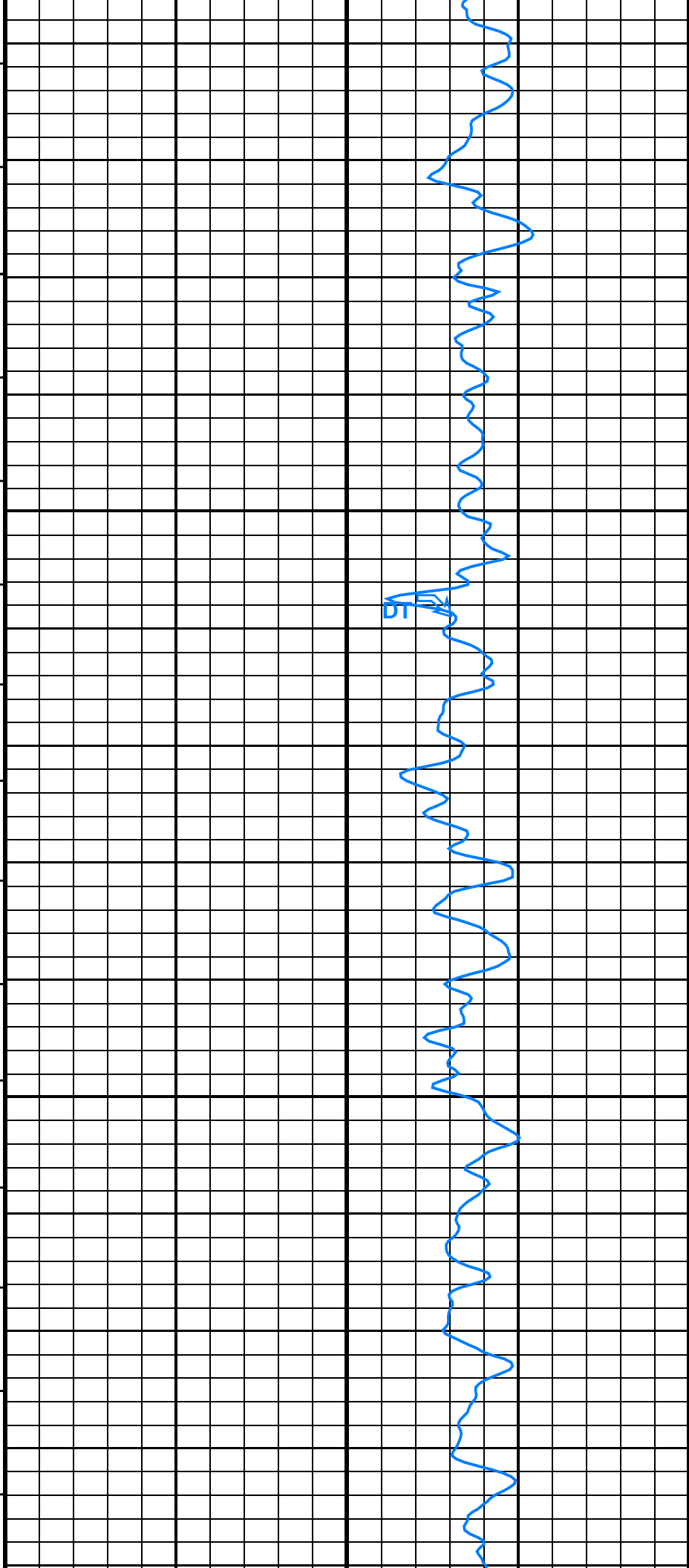
475

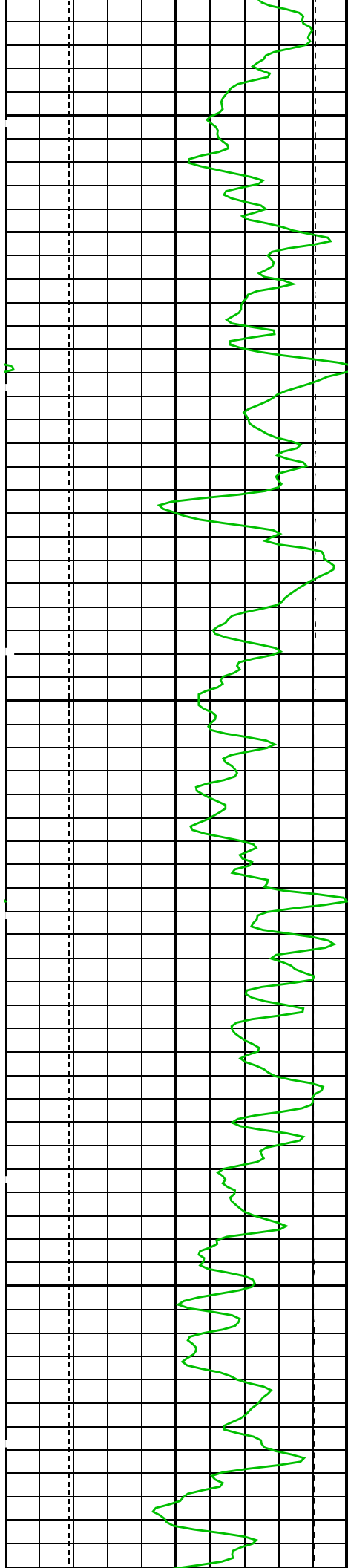




500

525

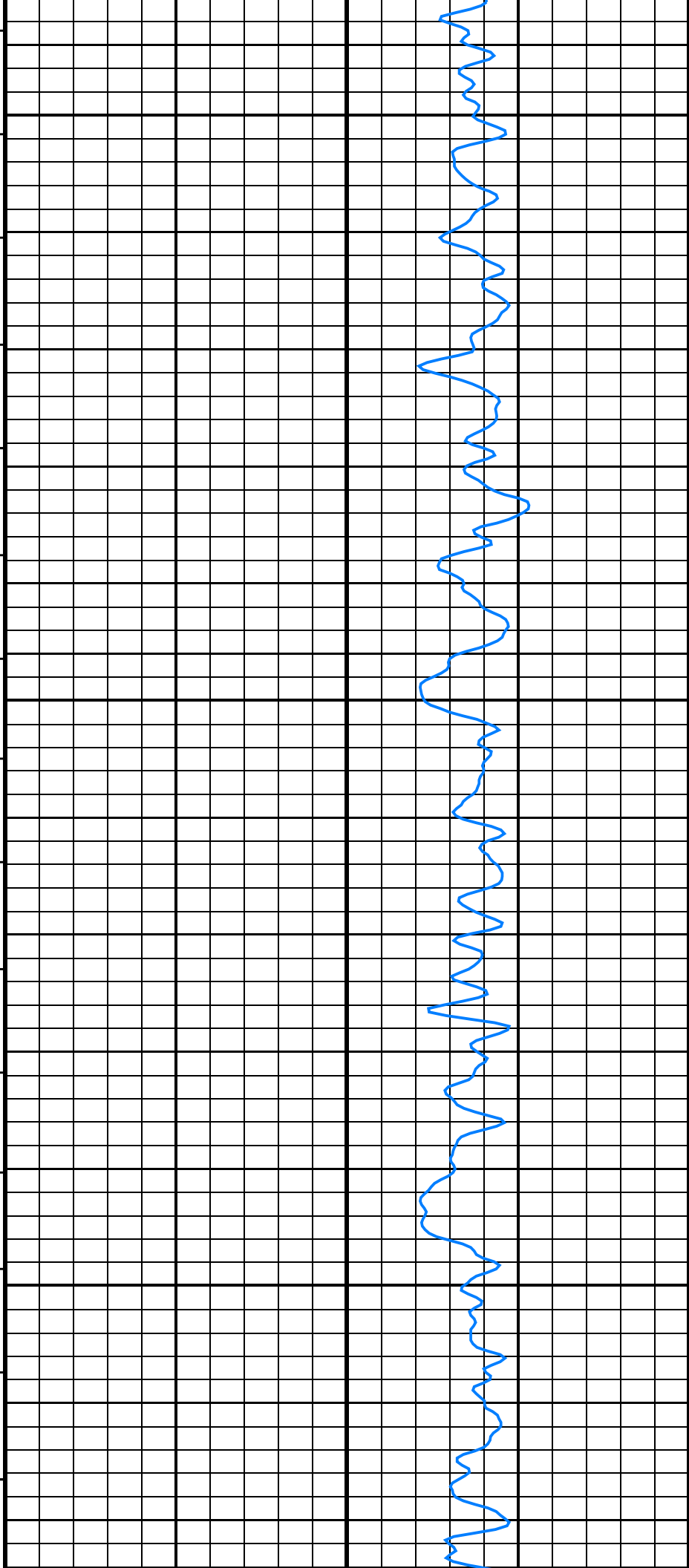


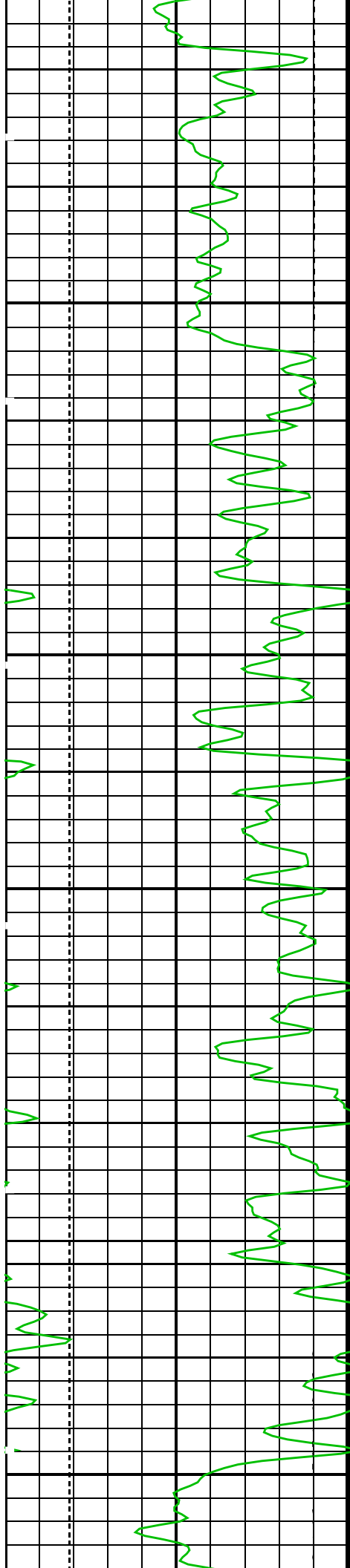


550

575

600

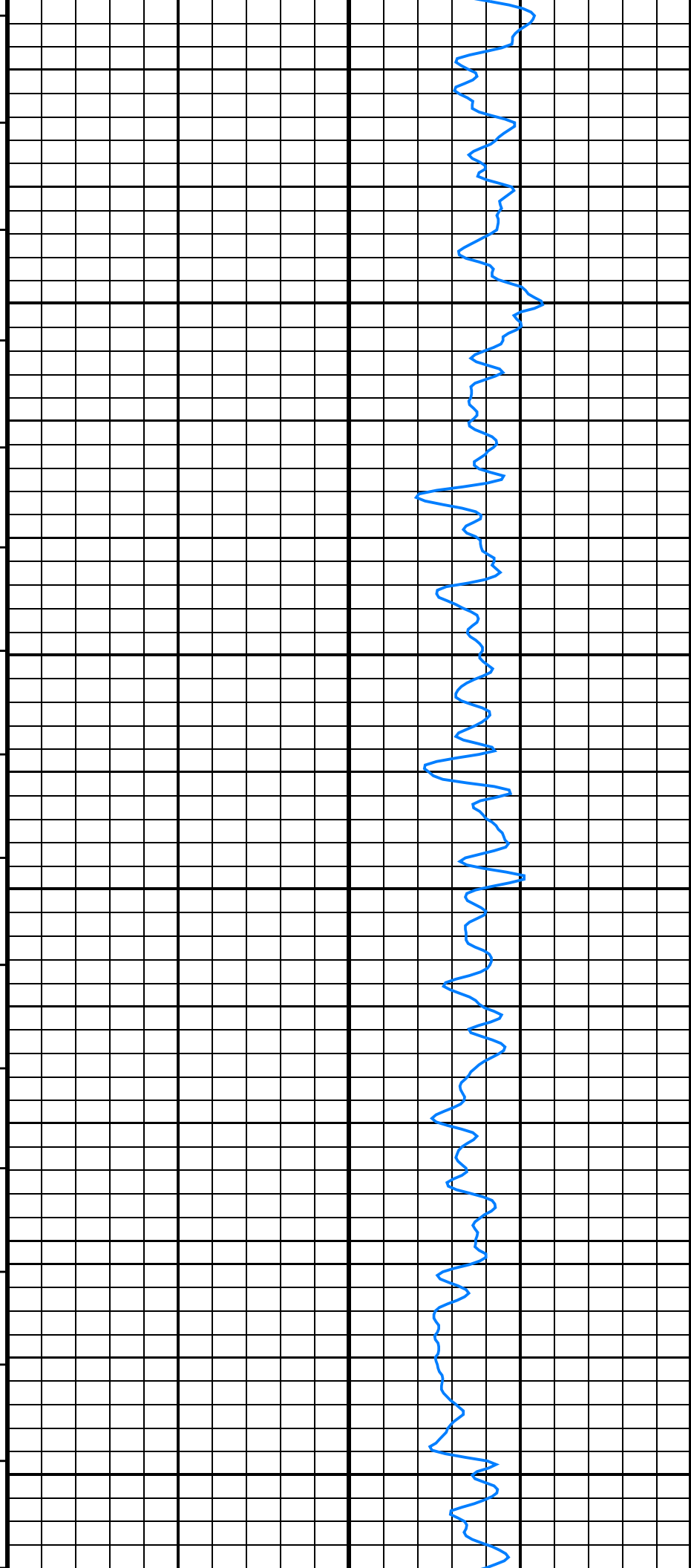


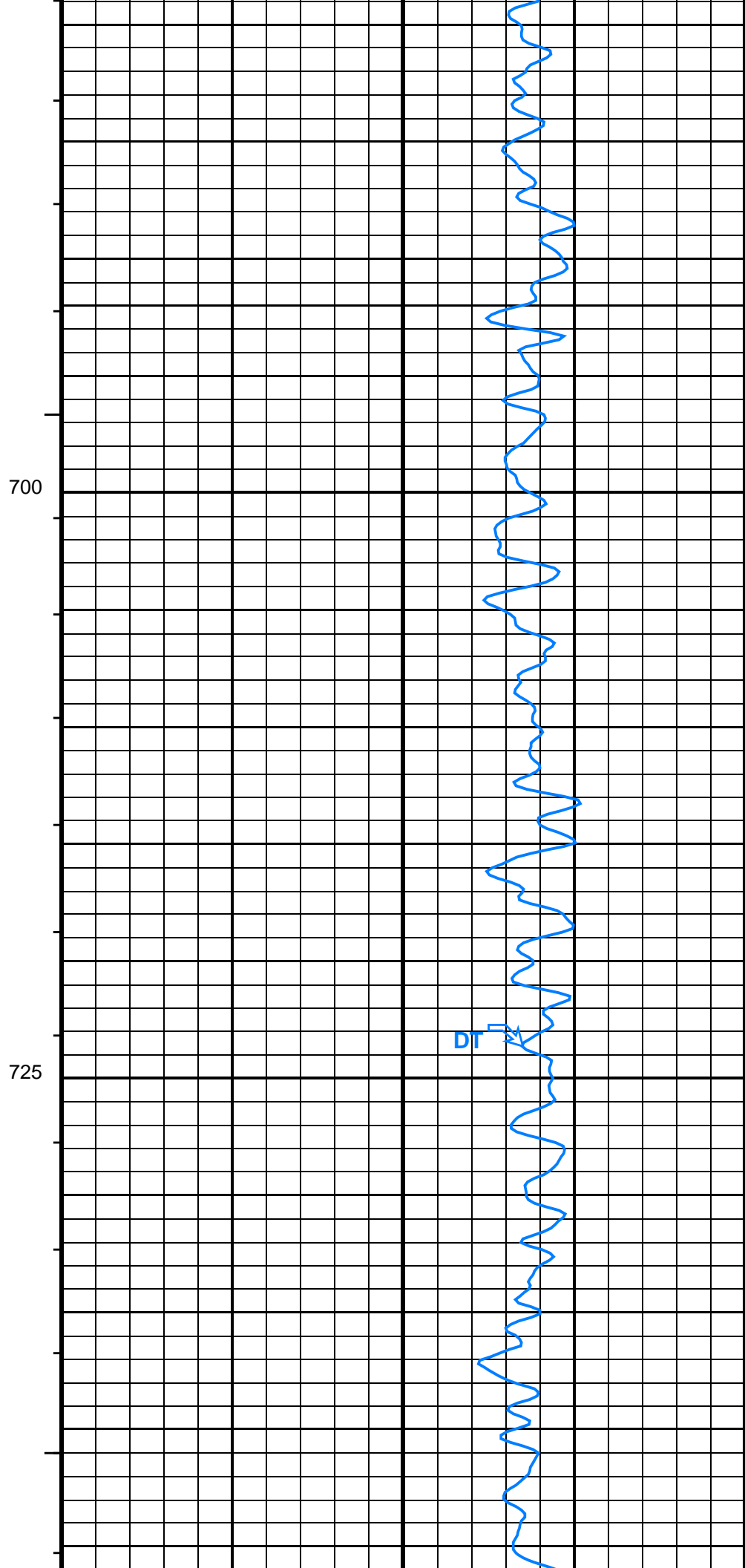
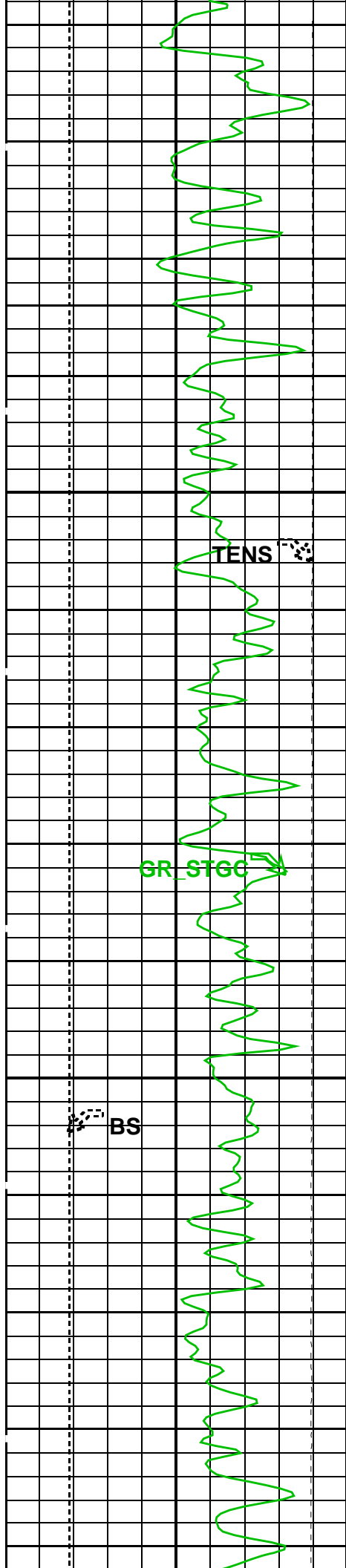


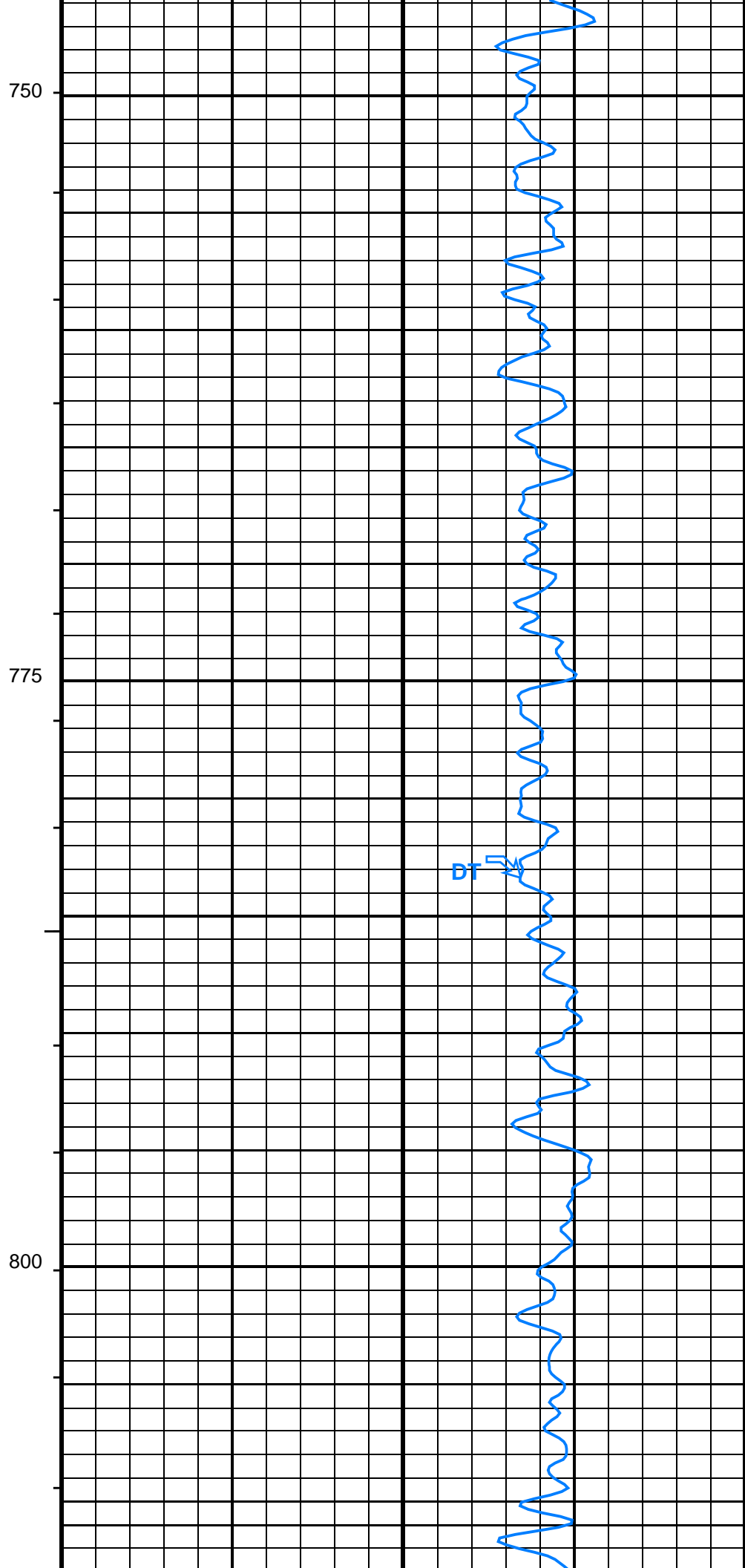
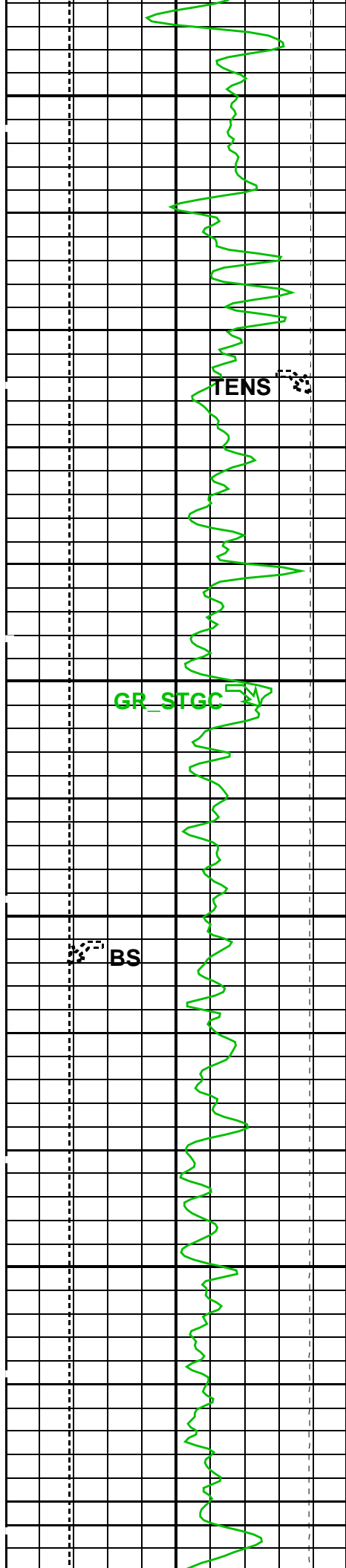
625

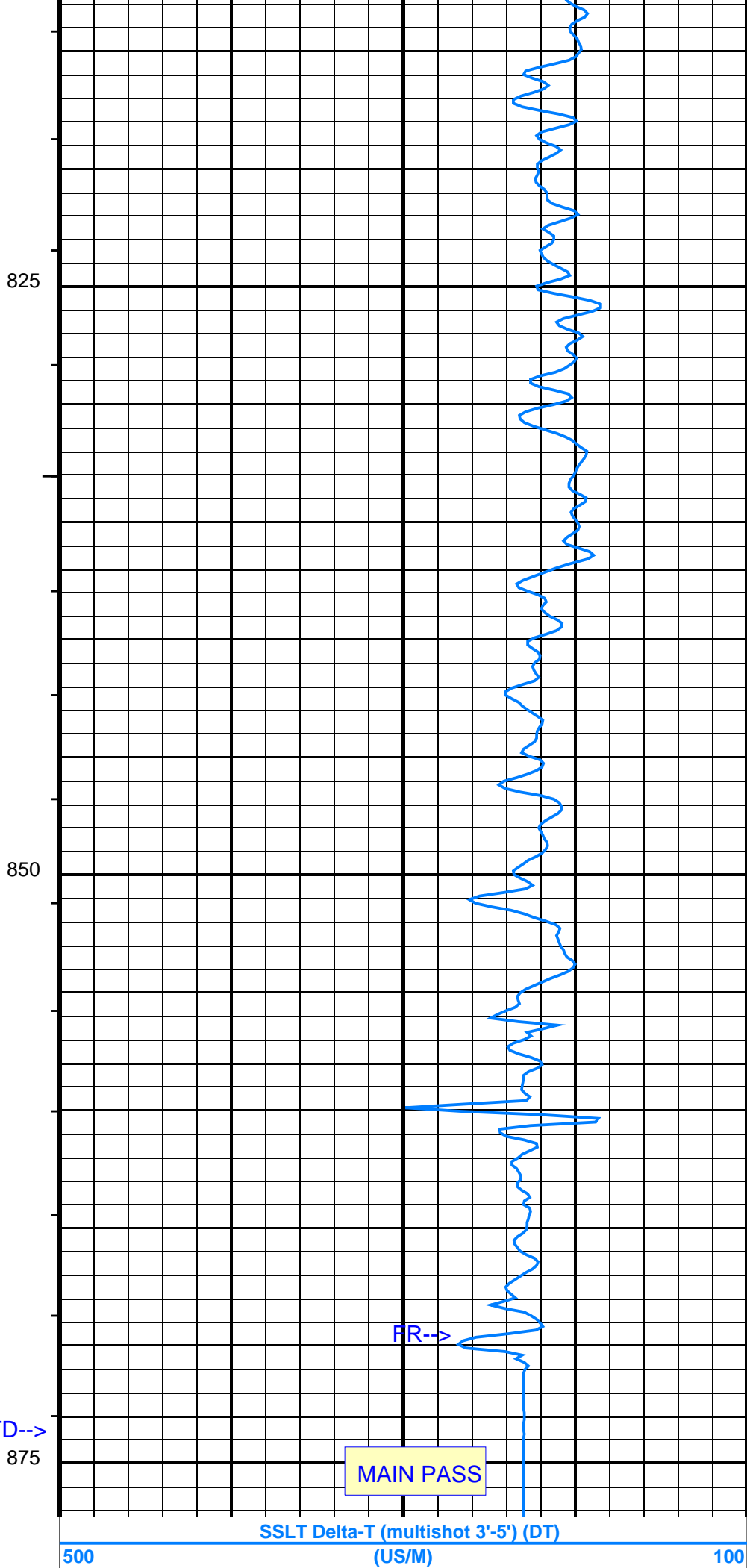
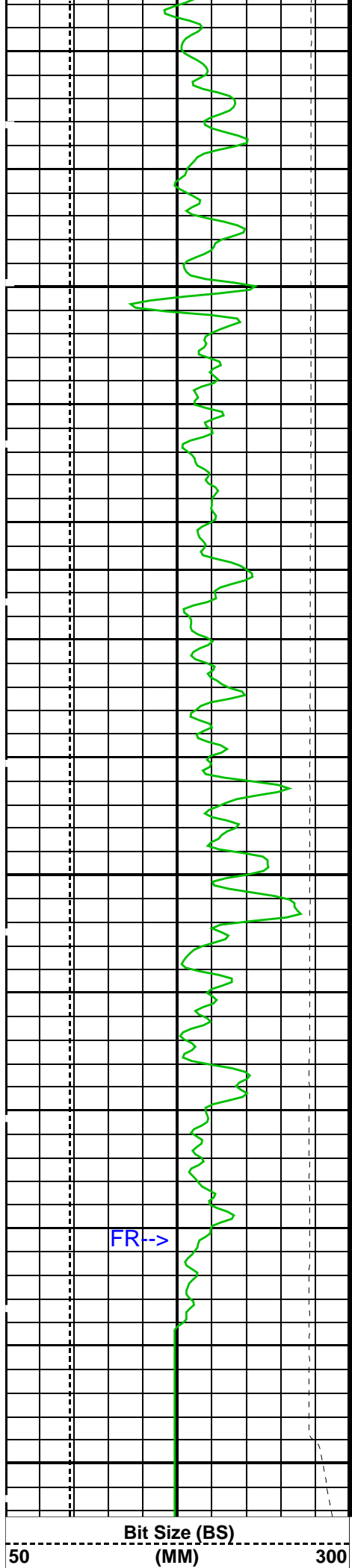
650

675









Gamma Ray (GR_STGC)		
0	(GAPI)	150
Tension (TENS)		
25000	(N)	0

PIP SUMMARY

- └ Integrated Transit Time Minor Pip Every 1 MS
- └ Integrated Transit Time Major Pip Every 10 MS

Time Mark Every 60 S

Parameters

DLIS Name	Description	Value	
ACSR	Array Cycle Skip Recovery	ON	
AMSG	Auxilliary Minimum Sliding Gate	180	US
BS	Bit Size	96.000	MM
CBLG	CBL Gate Width	80	US
DDE1	Digitizing Delay 1 - Upper Tx	200	US
DDE2	Digitizing Delay 2 - Lower Tx	200	US
DDE3	Digitizing Delay 3 - Far Tx	200	US
DETE	Detection Peak	E2	
DFAD_ATC	DFAD Automatic Threshold Control	ON	
DFAD_INTERVAL_MODE	Detection Interval Mode for first arrival	TRACK	
DLSR	Depth Log Sampling Rate	TT1.5_WF6	
DORL	Depth Offset Repeat Analysis	0.0	M
DSIN	Digitizing Sample Interval	10	US
DTCM	Delta-T Computation Mode	FULL	
DTLCM	Delta-T Long Computation Mode	FULL	
DWCO	Digitizing Word Count	256	
GAI1	Gain Control 1 - Upper Tx	HIGH	
GAI2	Gain Control 2 - Lower Tx	HIGH	
GAI3	Gain Control 3 - Far Tx	HIGH	
MAHTR	Manual High Threshold Refernce	40	
MNHTR	Minimum High Threshold Reference	30	
MODE	Sonic Firing Mode	DT_BHC	
NMSG	Near Minimum Sliding Gate	140	US
NMXG	Near Maximum Sliding Gate	750	US
NUMP	Number of Detection Passes	2	
NWI	Number of Waveform Items	6	
RATE	Sonic Firing Rate	8.92857	HZ
SFAF	Sonic Formation Attenuation Factor	0	DB/M
SGAD	Sliding Gate Allow/Disallow	ON	
SGCL	Sliding Gate Closing Delta-T	558	US/M
SGCW	Sliding Gate Closing Width	33	US
SGDT	Sliding Gate Delta-T	131	US/M
SGW	Sliding Gate Width	80	US
SLEV	Signal Level for Threshold Control	5000	
WMAG	DFAD Waveform Magnifier	1	
ZCGW	Zero Crossing Gate Width	100	US
ZCTT	Option to compute Zero Crossing Transit Time	OFF	

Format: SSLT_DT Vertical Scale: 1:240 Graphics File Created: 03-Aug-2000 09:19

OP System Version: 9C0-413

MCM

SSLT-B OP9-KP2 STGC-B OP9-KP2

Output DLIS Files

DEFAULT SSLT .013 FN:10 PRODUCER 03-Aug-2000 09:19

Input DLIS Files

DEFAULT SSLT .012 FN:9 PRODUCER 03-Aug-2000 09:11 876.3 M 831.0 M

Output DLIS Files

DEFAULT SSLT .013 FN:10 PRODUCER 03-Aug-2000 09:19

OP System Version: 9C0-413

MCM

PIP SUMMARY

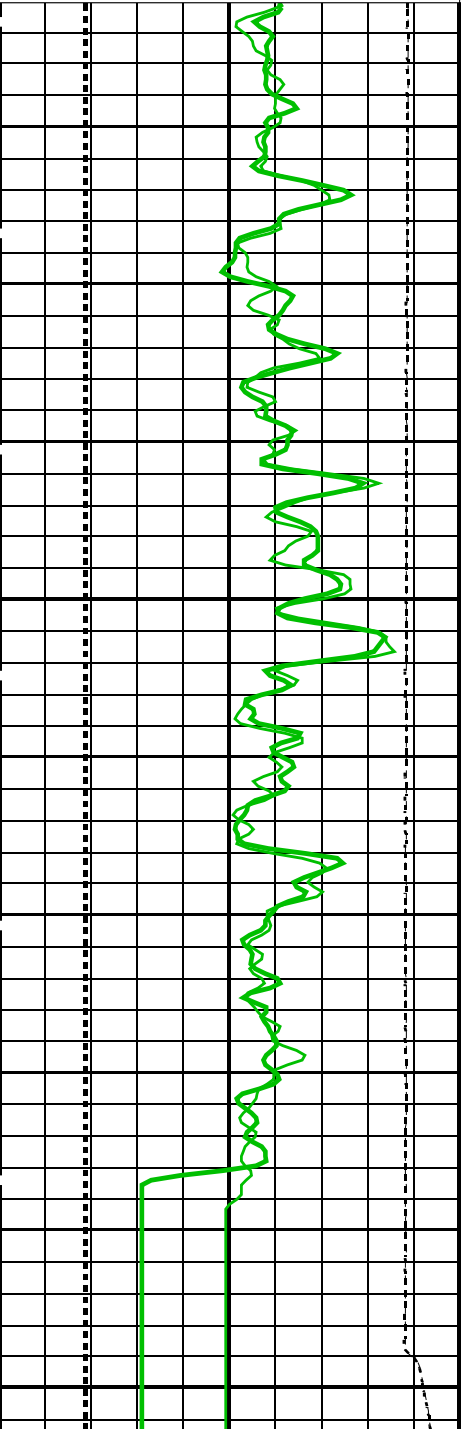
- └ Integrated Transit Time Minor Pip Every 1 MS
- └ Integrated Transit Time Major Pip Every 10 MS

Time Mark Every 60 S

TENS_REP Curve (TENS_REP)
25000 (N) 0

GR_STGC_REP Curve (GR_STGC_REP)
0 (GAPI) 150

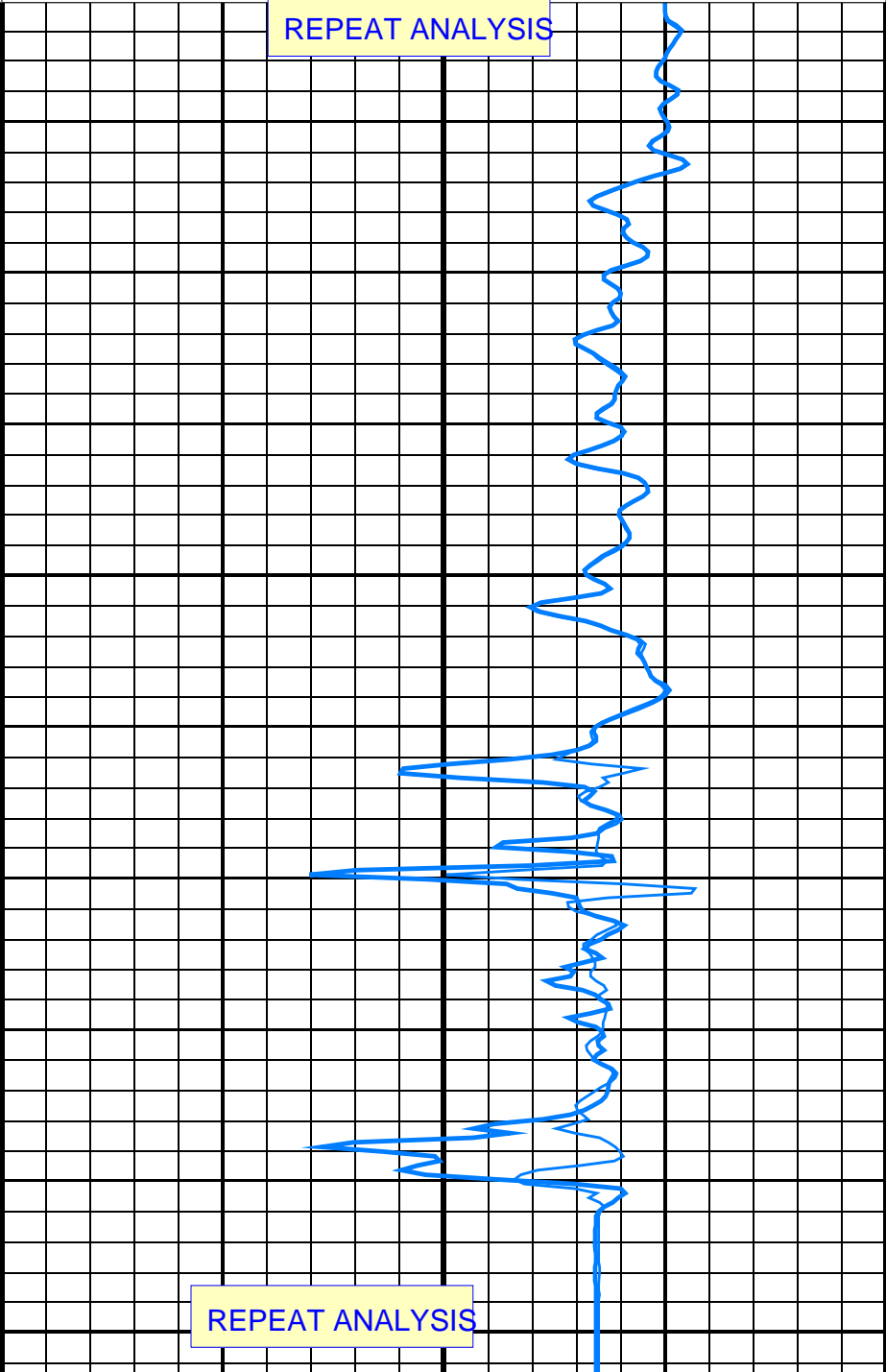
BS_REP Curve (BS_REP)
50 (MM) 300



BS_REP Curve (BS_REP)
50 (MM) 300

GR_STGC_REP Curve (GR_STGC_REP)
0 (GAPI) 150

DT_REP Curve (DT_REP)
500 (US/M) 100



DT_REP Curve (DT_REP)
500 (US/M) 100

TENS_REP Curve (TENS_REP)
25000 (N) 0

PIP SUMMARY

Integrated Transit Time Minor Pip Every 1 MS

Integrated Transit Time Major Pip Every 10 MS

Time Mark Every 60 S

Parameters			
DLIS Name	Description	Value	
ACSR	Array Cycle Skip Recovery	ON	
AMSG	Auxilliary Minimum Sliding Gate	180	US
BS	Bit Size	96.000	MM
CBLG	CBL Gate Width	80	US
DDE1	Digitizing Delay 1 - Upper Tx	200	US
DDE2	Digitizing Delay 2 - Lower Tx	200	US
DDE3	Digitizing Delay 3 - Far Tx	200	US
DETE	Detection Peak	E2	
DFAD_ATC	DFAD Automatic Threshold Control	ON	
DFAD_INTERVAL_MODE	Detection Interval Mode for first arrival	TRACK	
DLSR	Depth Log Sampling Rate	TT1.5_WF6	
DORL	Depth Offset Repeat Analysis	0.0	M
DSIN	Digitizing Sample Interval	10	US
DTCM	Delta-T Computation Mode	FULL	
DTLCM	Delta-T Long Computation Mode	FULL	
DWCO	Digitizing Word Count	256	
GAI1	Gain Control 1 - Upper Tx	HIGH	
GAI2	Gain Control 2 - Lower Tx	HIGH	
GAI3	Gain Control 3 - Far Tx	HIGH	
MAHTR	Manual High Threshold Reference	40	
MNHTR	Minimum High Threshold Reference	30	
MODE	Sonic Firing Mode	DT_BHC	
NMSG	Near Minimum Sliding Gate	140	US
NMXG	Near Maximum Sliding Gate	750	US
NUMP	Number of Detection Passes	2	
NWI	Number of Waveform Items	6	
RATE	Sonic Firing Rate	8.92857	HZ
SFAF	Sonic Formation Attenuation Factor	0	DB/M
SGAD	Sliding Gate Allow/Disallow	ON	
SGCL	Sliding Gate Closing Delta-T	558	US/M
SGCW	Sliding Gate Closing Width	33	US
SGDT	Sliding Gate Delta-T	131	US/M
SGW	Sliding Gate Width	80	US
SLEV	Signal Level for Threshold Control	5000	
WMAG	DFAD Waveform Magnifier	1	
ZCGW	Zero Crossing Gate Width	100	US
ZCTT	Option to compute Zero Crossing Transit Time	OFF	
Format: SSLT_DT_REP Vertical Scale: 1:240 Graphics File Created: 03-Aug-2000 09:19			

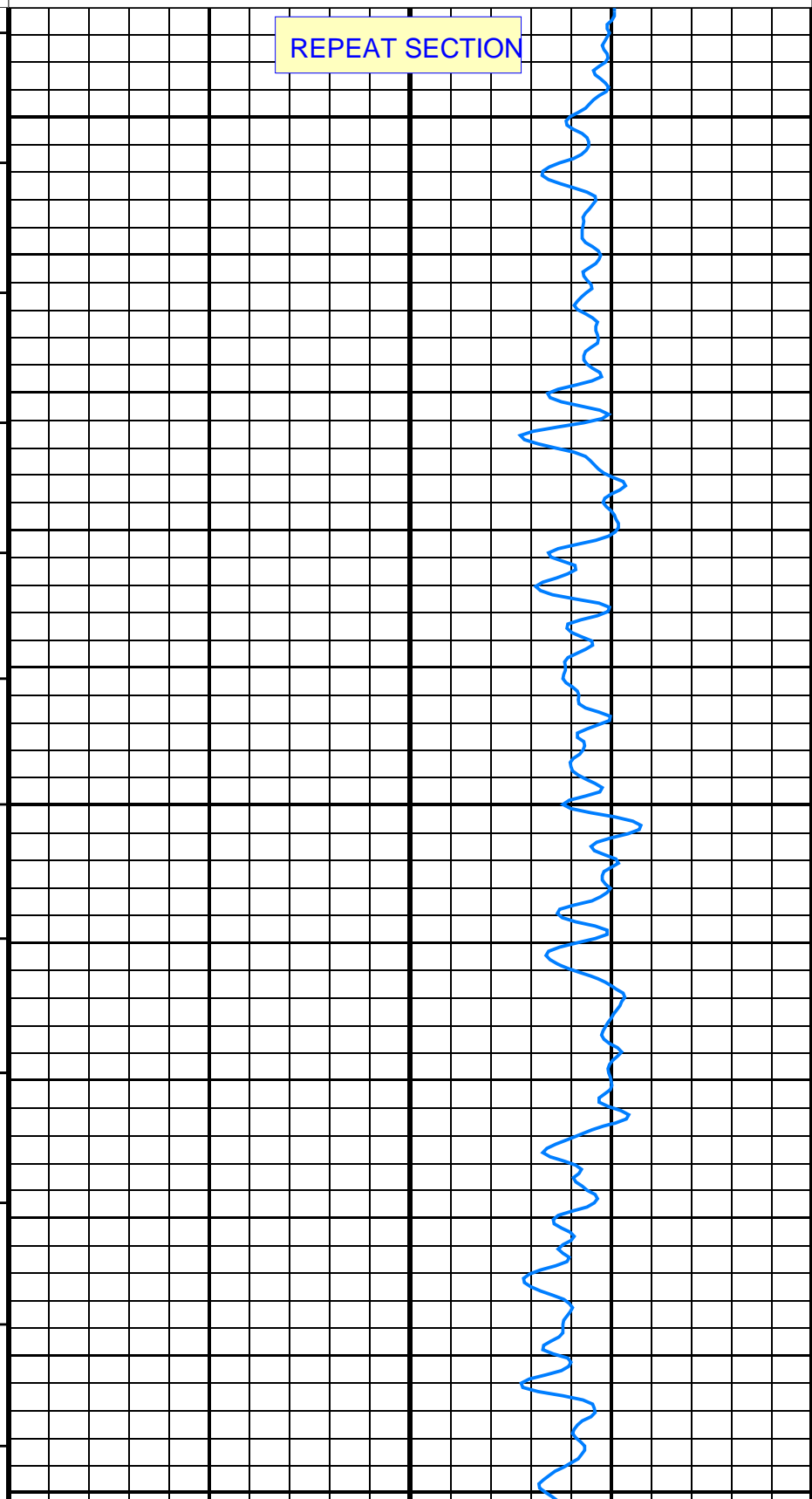
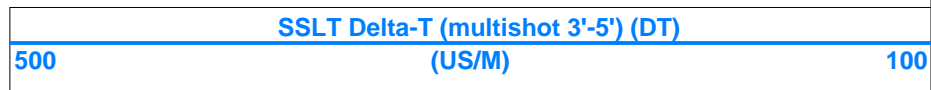
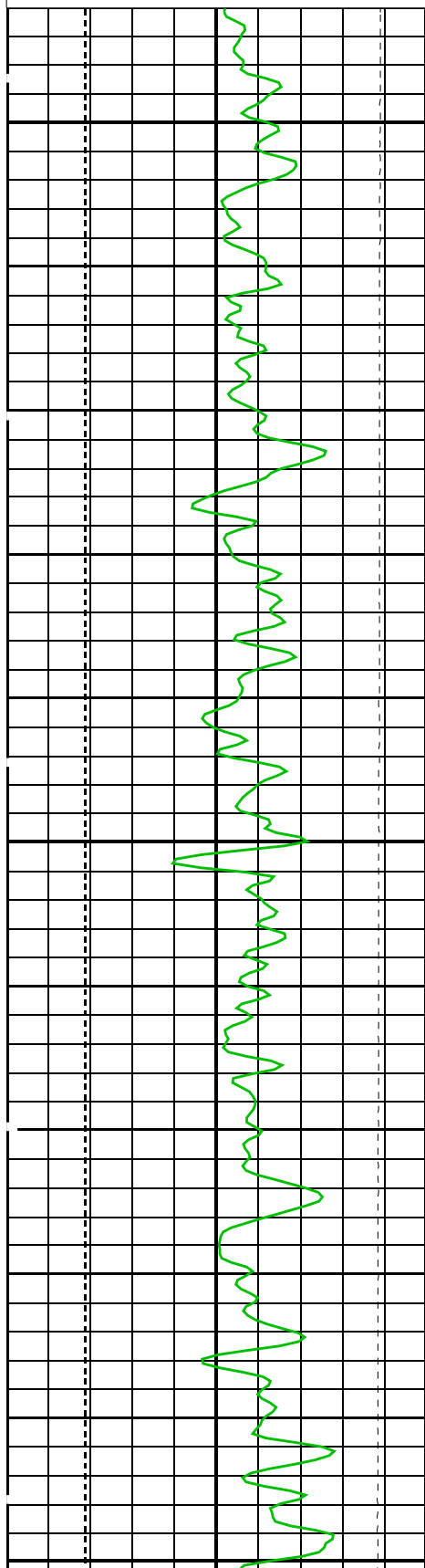
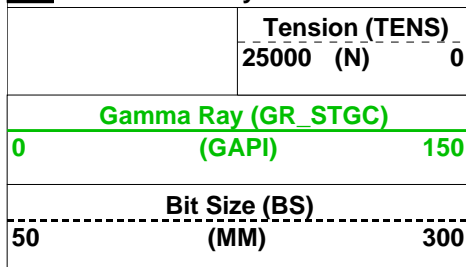
OP System Version: 9C0-413						
MCM						
SSLT-B	OP9-KP2			STGC-B	OP9-KP2	
Input DLIS Files						
DEFAULT	SSLT .012	FN:9	PRODUCER	03-Aug-2000 09:11	876.3 M	831.0 M
Output DLIS Files						
DEFAULT	SSLT .013	FN:10	PRODUCER	03-Aug-2000 09:19		

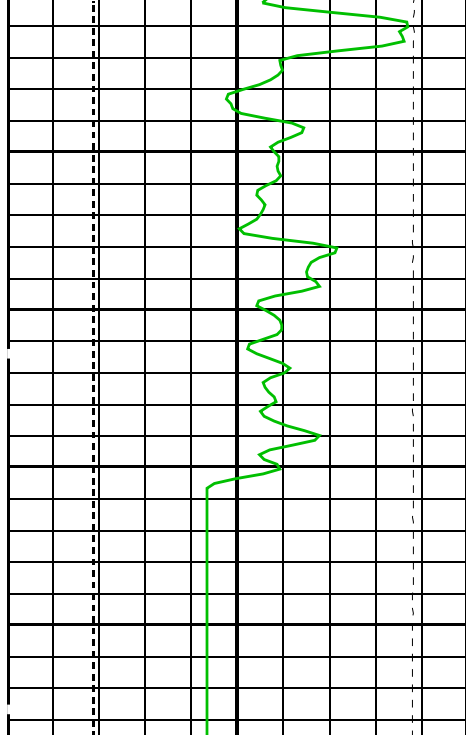
Output DLIS Files					
DEFAULT	SSLT .010	FN:7 PRODUCER	03-Aug-2000 08:55	873.6 M	796.0 M
OP System Version: 9C0-413					
MCM					
SSLT-B	OP9-KP2	STGC-B	OP9-KP2		

PIP SUMMARY

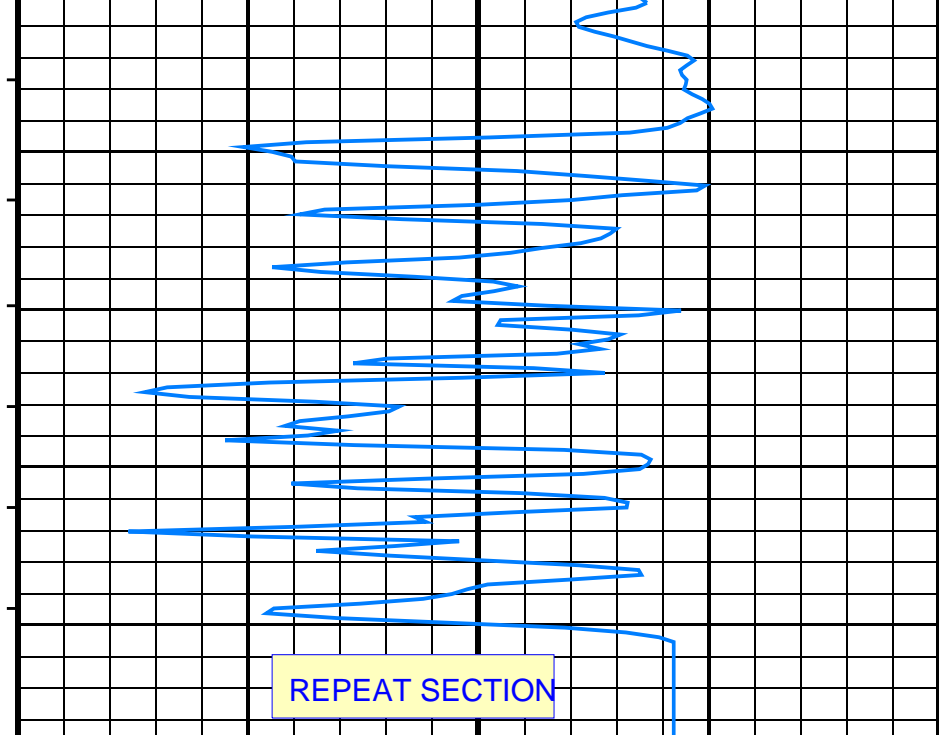
- └ Integrated Transit Time Minor Pip Every 1 MS
- └ Integrated Transit Time Major Pip Every 10 MS

Time Mark Every 60 S





Bit Size (BS)	
50	300
(MM)	
Gamma Ray (GR_STGC)	
0	150
(GAPI)	
Tension (TENS)	
25000 (N)	0



SSLT Delta-T (multishot 3'-5') (DT)	
500	100
(US/M)	

PIP SUMMARY

- └ Integrated Transit Time Minor Pip Every 1 MS
- └ Integrated Transit Time Major Pip Every 10 MS

Time Mark Every 60 S

Parameters

DLIS Name	Description	Value	
ACSR	Array Cycle Skip Recovery	ON	
AMSG	Auxilliary Minimum Sliding Gate	180	US
BS	Bit Size	96.000	MM
CBLG	CBL Gate Width	80	US
DDE1	Digitizing Delay 1 - Upper Tx	200	US
DDE2	Digitizing Delay 2 - Lower Tx	200	US
DDE3	Digitizing Delay 3 - Far Tx	200	US
DETE	Detection Peak	E2	
DFAD_ATC	DFAD Automatic Threshold Control	ON	
DFAD_INTERVAL_MODE	Detection Interval Mode for first arrival	TRACK	
DLSR	Depth Log Sampling Rate	TT1.5_WF6	
DSIN	Digitizing Sample Interval	10	US
DTCM	Delta-T Computation Mode	FULL	
DTLCM	Delta-T Long Computation Mode	FULL	
DWCO	Digitizing Word Count	256	
GAI1	Gain Control 1 - Upper Tx	HIGH	
GAI2	Gain Control 2 - Lower Tx	HIGH	
GAI3	Gain Control 3 - Far Tx	HIGH	
MAHTR	Manual High Threshold Reference	40	
MNHTR	Minimum High Threshold Reference	30	
MODE	Sonic Firing Mode	DT_BHC	
NMSG	Near Minimum Sliding Gate	140	US
NMXG	Near Maximum Sliding Gate	750	US
NUMP	Number of Detection Passes	2	
NWI	Number of Waveform Items	6	
RATE	Sonic Firing Rate	8.92857	HZ
SFAF	Sonic Formation Attenuation Factor	0	DB/M
SGAD	Sliding Gate Allow/Disallow	ON	
SGCL	Sliding Gate Closing Delta-T	558	US/M
SGCW	Sliding Gate Closing Width	33	US
SGDT	Sliding Gate Delta-T	131	US/M
SGW	Sliding Gate Width	80	US
SLEV	Signal Level for Threshold Control	5000	

WMAG
ZCGW
ZCTT

DFAD Waveform Magnifier
Zero Crossing Gate Width
Option to compute Zero Crossing Transit Time

100
OFF

US

Format: SSLT_DT Vertical Scale: 1:240 Graphics File Created: 03-Aug-2000 08:55

OP System Version: 9C0-413
MCM

SSLT-B OP9-KP2 STGC-B OP9-KP2

Output DLIS Files

DEFAULT SSLT .010 FN:7 PRODUCER 03-Aug-2000 08:55

Calibration and Check Summary							
Measurement	Nominal	Master	Before	After	Change	Limit	Units
SLIM Telemetry Gamma-ray Cartridge - B Wellsite Calibration - Detector Calibration							
Before: 1-AUG-2000 14:44							
Gamma Ray (Jig - Bkg)	149.1	N/A	149.1	N/A	N/A	13.55	GAPI
Gamma Ray (Calibrated)	155.1	N/A	155.1	N/A	N/A	15.00	GAPI

SLIM Telemetry Gamma-ray Cartridge - B / Equipment Identification

Primary Equipment:

STGC Gamma-ray & Accelerometer CartridgeSTGC Telemetry Cartridge

STGC - B
STGC - A

Auxiliary Equipment:

SLIM Electronics Cartridge Housing

STGH - B 8007

SLIM Telemetry Gamma-ray Cartridge - B Wellsite Calibration											
Detector Calibration											
Phase	Gamma Ray Background GAPI		Value	Phase	Gamma Ray (Jig - Bkg) GAPI		Value	Phase	Gamma Ray (Calibrated) GAPI		Value
Before			47.68	Before			149.1	Before			155.1
0 (Minimum)	30.00 (Nominal)	120.0 (Maximum)		135.5 (Minimum)	149.1 (Nominal)	162.6 (Maximum)		140.1 (Minimum)	155.1 (Nominal)	170.1 (Maximum)	
Before: 1-AUG-2000 14:44											

COMPANY: DEER LAKE OIL & GAS INC.

WELL: DEER LAKE OIL & GAS ET AL WESTERN ADVENTURE NO. 1

FIELD: EXPLORATORY

PROVINCE: NEWFOUNDLAND

BOTTOM LOG INTERVAL

SCHLUMBERGER DEPTH

DEPTH DRILLER

KELLY BUSHING

DRILL FLOOR

GROUND LEVEL

870 m

873.5 m

872 m

92.5 m

92.5 m

90 m